

# ROAD INDEX

<b>A</b>	AQUILLA BLVD. C3	I cont'	<b>S</b>	SPENCER ST. B3-B4
	AQUILLA RD. A1-B4			STILLWELL RD. F3-G3
	ALDENSHIRE DR. C4	<b>J</b>		STONE SPRINGS DR. 4C
<b>B</b>	BERKSHIRE DR. B3	<b>K</b>	<b>T</b>	TAYLORWELLS RD. C1-D6
		KILE RD. F4-G1		TURNER DR. B3
<b>C</b>	CHARDON WINDSOR RD. D1-G2		<b>U</b>	
	CLARIDON TROY RD. D1-D6			
	CORNELIA DR. B3	<b>L</b>	<b>V</b>	
	CLARIDON PARK DR. D-2	LORING AVE. B3		
<b>D</b>	DURKEE RD. F6-G6	<b>M</b>	<b>W</b>	
		MAYFIELD RD. A4-G4		
		MEADOWWOOD DR. B2		
<b>E</b>	ENSIGN RD. D5-F5	<b>N</b>	<b>X</b>	
<b>F</b>	FOREST RD. E4-F6	<b>O</b>	<b>Y</b>	
		OLD STATE RD. E1-G6		
<b>G</b>	GOREDON DR. B3	<b>P</b>	<b>Z</b>	
		<b>Q</b>		
<b>H</b>	HALL RD. C2-D3	<b>R</b>		
<b>I</b>				

- ① CLARIDON LOCAL SCHOOL
- ② EAST CLARIDON METHODIST CHURCH
- ③ THE FIRST CONGREGATIONAL CHURCH
- ④ CHRISTIAN MISSIONARY ALLIANCE CH.
- ⑤ CLARIDON CENTER CEMETERY
- ⑥ EAST CLARIDON CEMETERY
- ⑦ WEST CLARIDON CEMETERY
- ⑧ CEMETERY
- ⑨ GEauga COUNTY HOME
- ⑩ GEauga COUNTY COMM. HOSPITAL
- ⑪ CLARIDON TOWN HALL
- ⑫ U.S. POST OFFICE (CLARIDON)
- ⑬
- ⑭
- ⑮
- ⑯

## CLARIDON TOWNSHIP

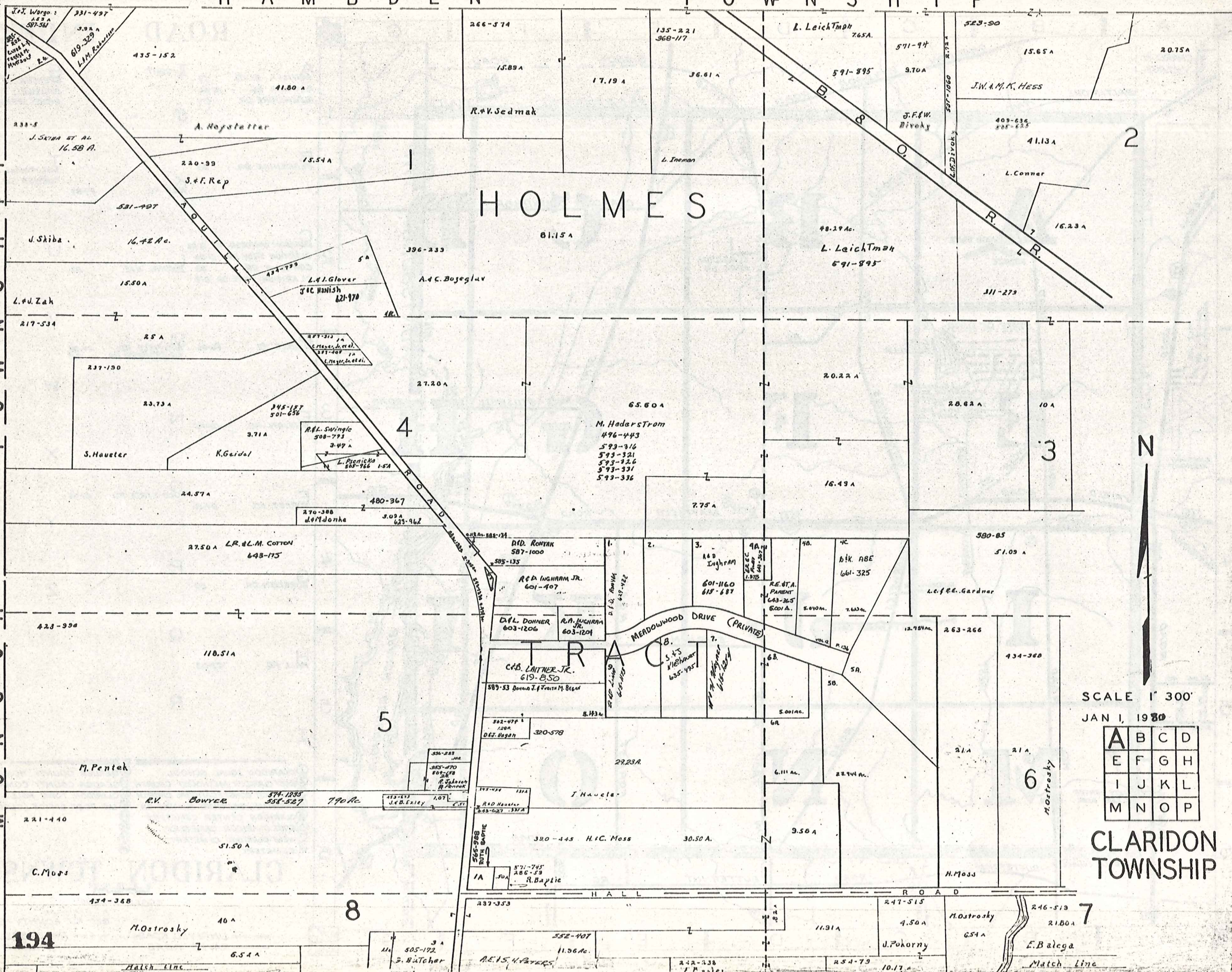
SCALE - 1" = 2000'

O.J. ROBINSON  
GEALGA COUNTY ENGINEER

- UNPAVED ROAD
- PAVED ROAD
- RAILROAD
- TOWNSHIP LINE

H A M B U R G T O W N S H I P

H I P  
S  
T  
O  
W  
N  
S  
H  
I  
P  
M  
U  
N  
I  
C  
I  
P  
A  
L



2

3

4

5

6

7

N

SCALE 1" = 300'  
JAN 1, 1980

A	B	C	D
E	F	G	H
I	J	K	L
M	N	O	P

CLARIDON TOWNSHIP

194

M. Ostrosky  
40 A

237-353

247-515

246-513

Match Line

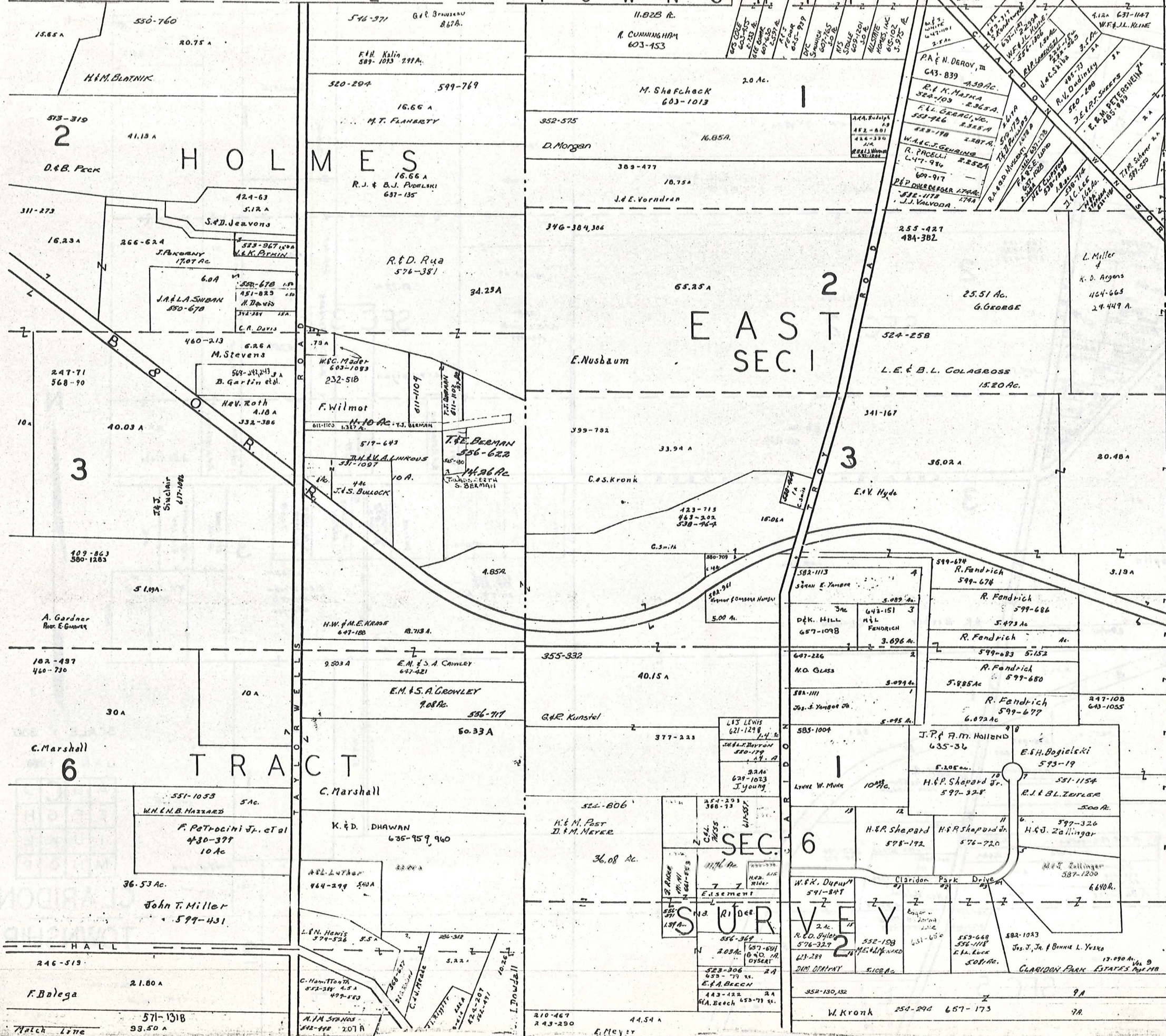
S. Butcher  
505-192

A.E. H. HAYES

J. F. M. S. I.

Match Line

H A M B D E N T O W N S H I P

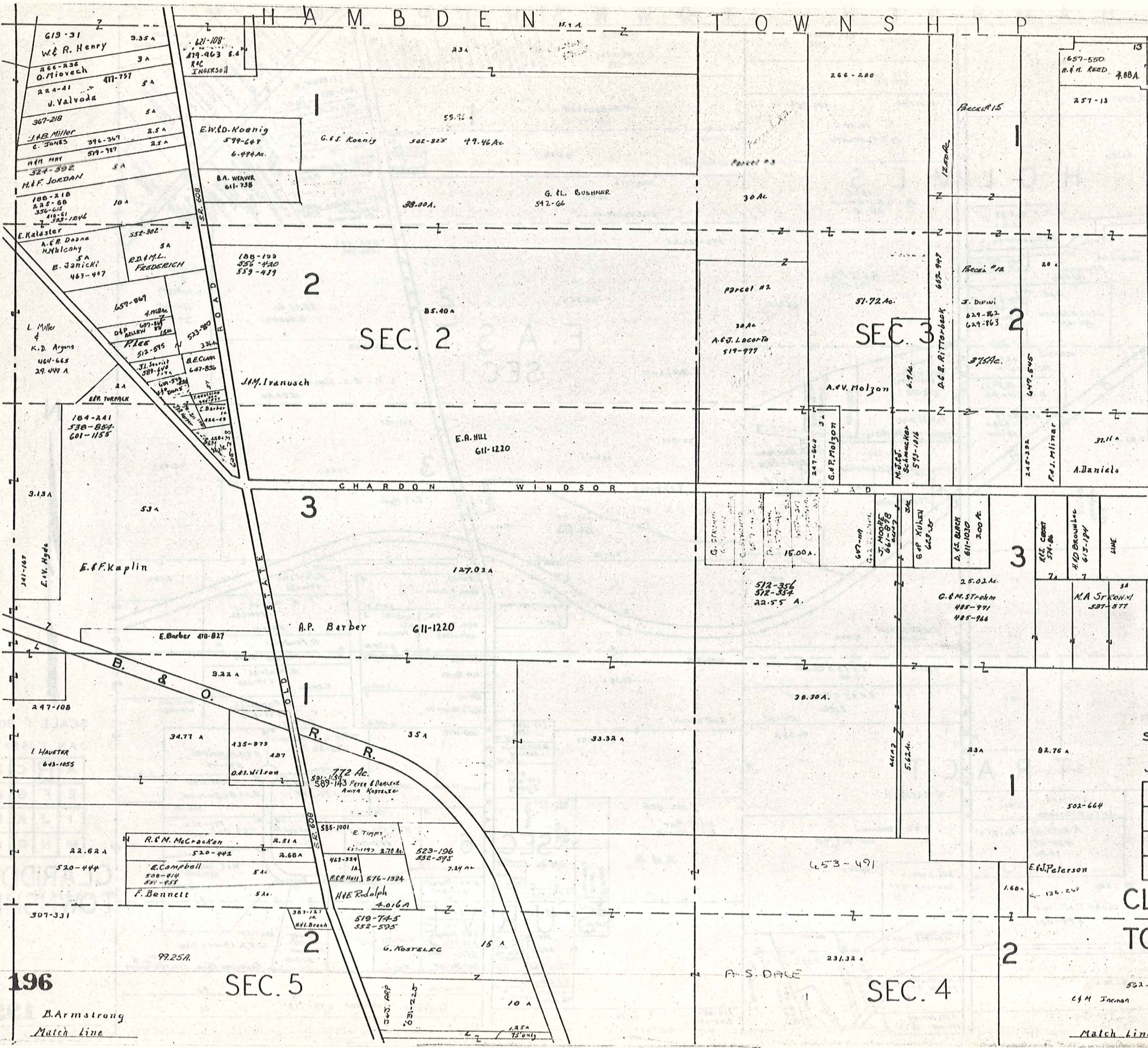


SCALE 1" = 300'  
JAN 1, 1980

A	B	C	D
E	F	G	H
I	J	K	L
M	N	O	P

CLARIDON TOWNSHIP

H A M B U R G T O W N S H I P



SCALE 1" = 300'

JAN 1, 1980

A	B	C	D
E	F	G	H
I	J	K	L
M	N	O	P

CLARIDON TOWNSHIP

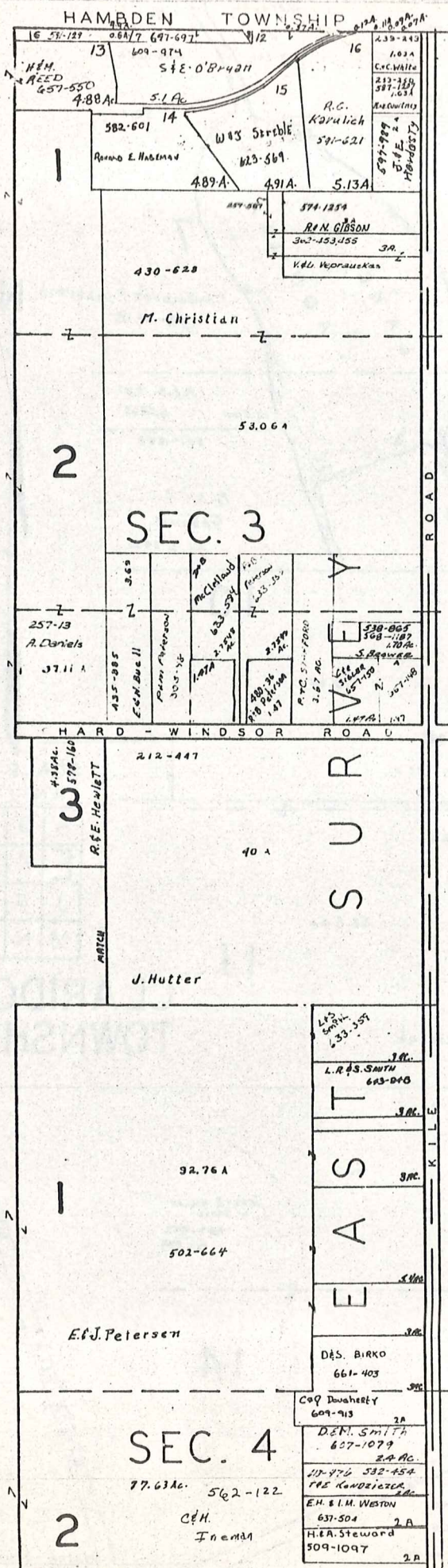
196

SEC. 5

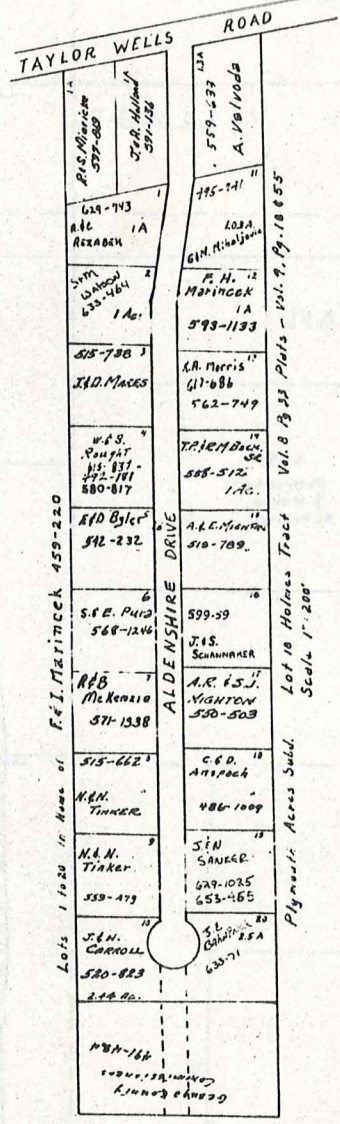
SEC. 4

B. Armstrong  
Match Line

Match Line



H A M P D E N T O W N S H I P



Lots 1 to 20 in Name of F.I. Merrinck 459-220

Vol. 8 P. 35 Plats - Vol. 7, P. 10 & 55  
Plymouth Acres Subd. Lot 10 Holmes Tract  
Scale 1"=200'



SCALE 1"=300'

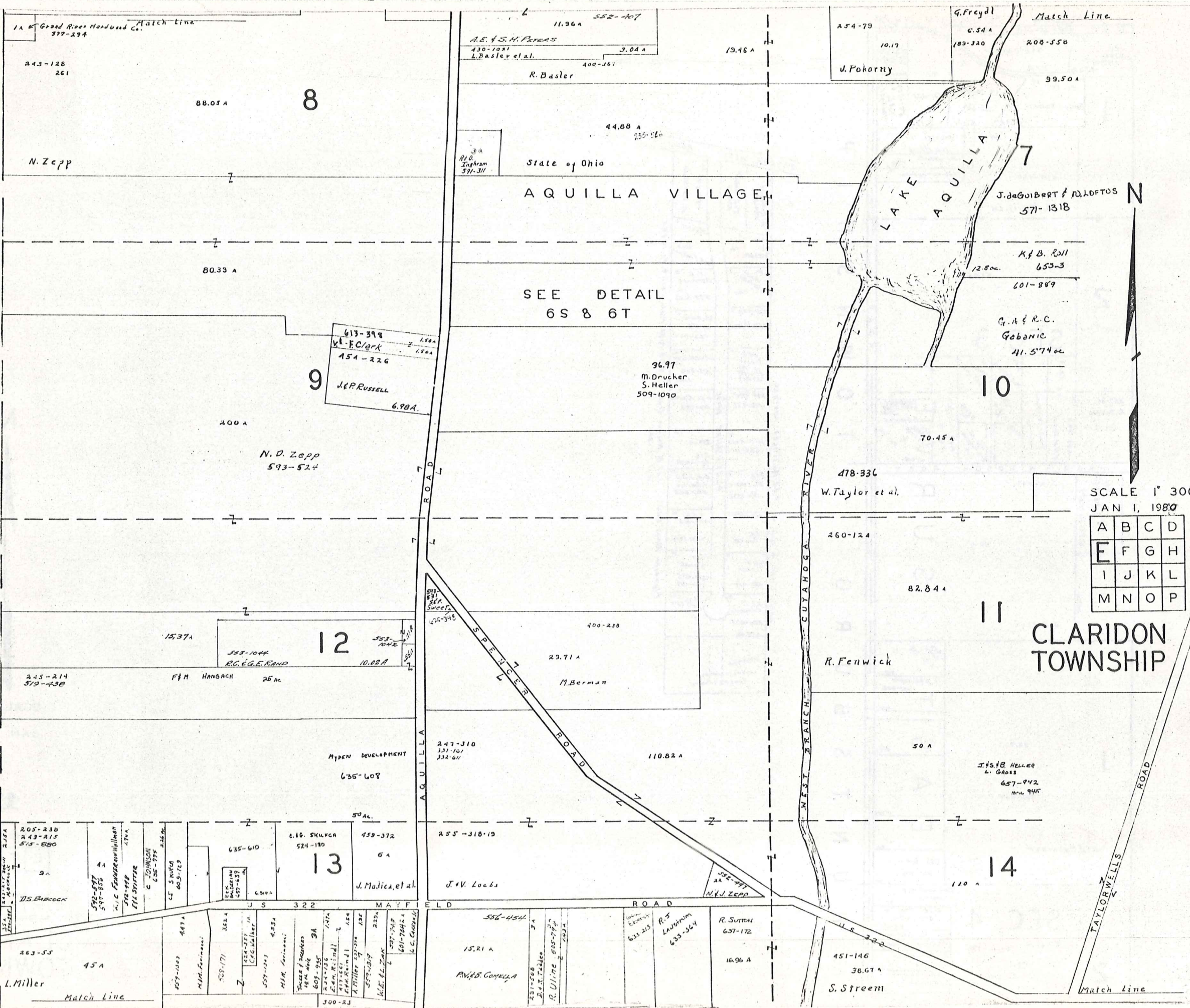
JAN 1, 1980

197

A	B	C	D
E	F	G	H
I	J	K	L
M	N	O	P

CLARIDON TOWNSHIP

P  
H  
S  
N  
T  
O  
W  
N  
S  
O  
N  
S  
U  
N



SCALE 1" = 300'  
JAN 1, 1980

A	B	C	D
E	F	G	H
I	J	K	L
M	N	O	P

# CLARIDON TOWNSHIP

Match Line  
Grand River Hardware Co.  
377-294

Match Line

243-128  
261

88.05 A

8

N. Zepp

80.33 A

9

200 A

N. D. Zepp  
593-524

613-398  
V. F. Clark  
454-226  
J. & P. Russell  
6.98 A.

11.96 A  
552-407

A.E. & S.H. Perces  
430-1021  
L. Basler et al.

R. Basler

19.46 A

254-79

U. Pokorny

G. Freyd  
6.54 A  
189-320

209-558

99.50 A

State of Ohio

AQUILLA VILLAGE

SEE DETAIL  
6S & 6T

36.97  
M. Drucker  
S. Heller  
509-1090

10

70.45 A

478-336

W. Taylor et al.

SCALE 1" = 300'  
JAN 1, 1980

A	B	C	D
E	F	G	H
I	J	K	L
M	N	O	P

# CLARIDON TOWNSHIP

15.37 A

12

533-1044  
R.C. & G.E. KAND

10.02 A

245-214  
519-438

F.M. HAMBACH

25 AC

400-238

23.71 A

M. Berman

533-1044  
SWEETS

25-348

247-310  
331-167  
332-611

110.82 A

HYDEN DEVELOPMENT  
635-608

50 AC

13

616. SKURCA  
524-180

459-372

J. Mulica, et al.

255-318-19

J. V. Loubs

14

110 A

J. & B. HELLER  
L. GAOS  
657-942  
M.L. 945

260-124

82.84 A

R. Fenwick

50 A

205-238  
243-215  
515-880

263-55

45 A

L. Miller

Match Line

Match Line

300-23

536-454

15.21 A

R. & B. COMELLA

231-368

R. Ulline

633-215

R. S. LAUBACH

633-364

R. SUTTON

637-172

16.96 A

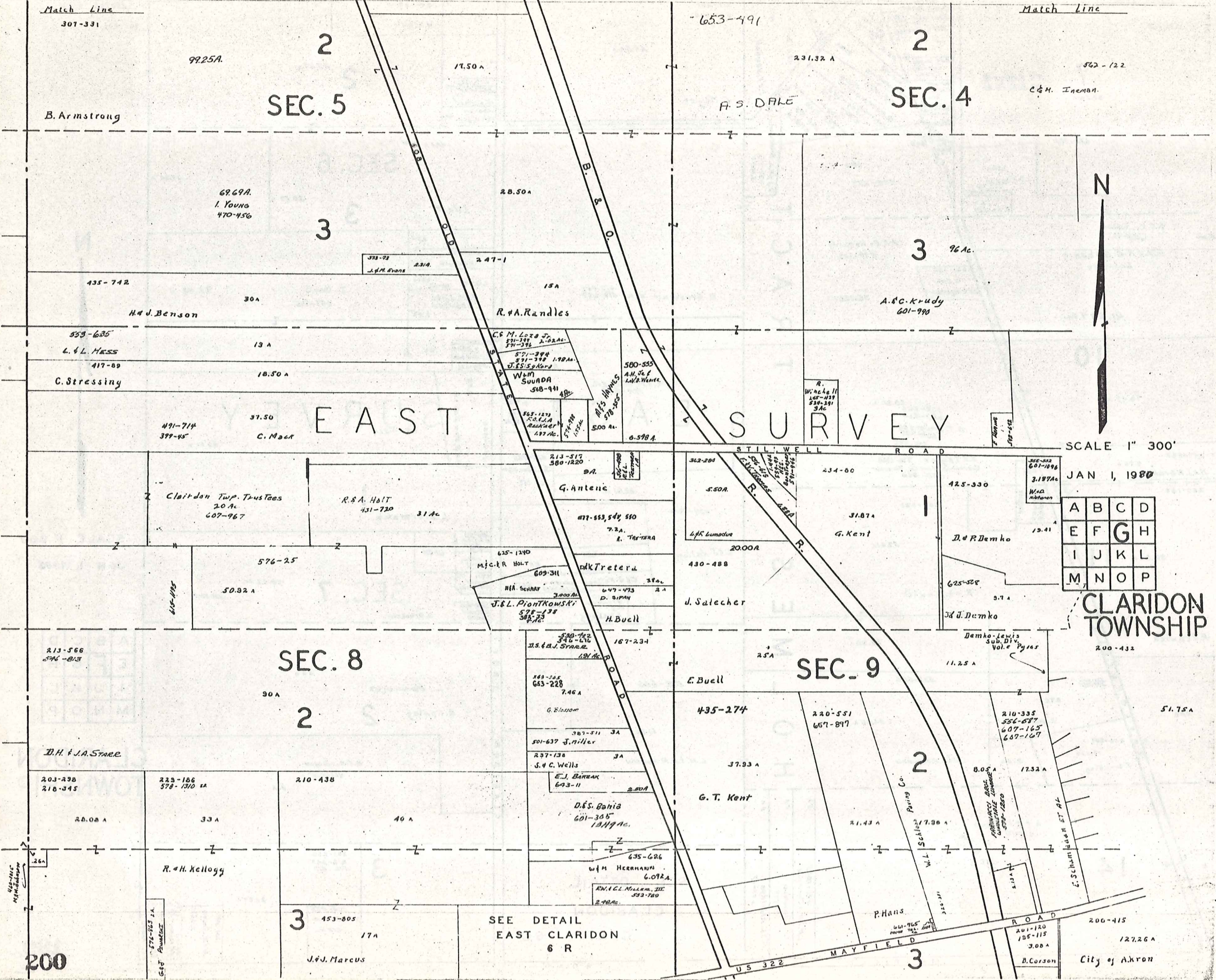
451-146

S. Stream

38.67 A

Match Line





SEC. 5

SEC. 4

SEC. 8

SEC. 9

EAST CLARIDON SURVEY

SCALE 1" = 300'

JAN 1, 1980

A	B	C	D
E	F	G	H
I	J	K	L
M	N	O	P

CLARIDON TOWNSHIP

SEE DETAIL EAST CLARIDON 6 R

200

City of Akron

Match Line

562-122

77. Ac.

C. M. Inman

SEC. 4

553-546 2.00 Ac.  
 T. J. C. BROWN  
 663-445  
 I. L. MITA 2.00 Ac.  
 FIT HENRY  
 509-887 2.00 Ac.  
 J. & A. M. Hess  
 515-808 2.00 Ac.  
 517-1250  
 J. F. V. J.  
 M. B. Y. MEADOWS  
 643-505 2.00 Ac.

200-101  
509-615  
16.72 A

A. Wolf  
R. Post

250-158  
H. B. & I. M. CHAPMAN  
8,397 A

546-29

400 AC

601-289  
5 A  
O. B. WARNER

R. Kelsey, Jr

427-509

20.60 A

E. Esser

STILLWELL ROAD

201-31

496-328  
9 A

G. C. Karch Jr.

50 A

City of Akron

200-432

2

51.75 A

SEC. 9

City of Akron

MAYFIELD ROAD

3

200-415

127.26 A

City of Akron

EAST SURVEY TOWNSHIP HUNTSBURG



SCALE 1" = 300'

JAN 1, 1980

A	B	C	D
E	F	G	H
I	J	K	L
M	N	O	P

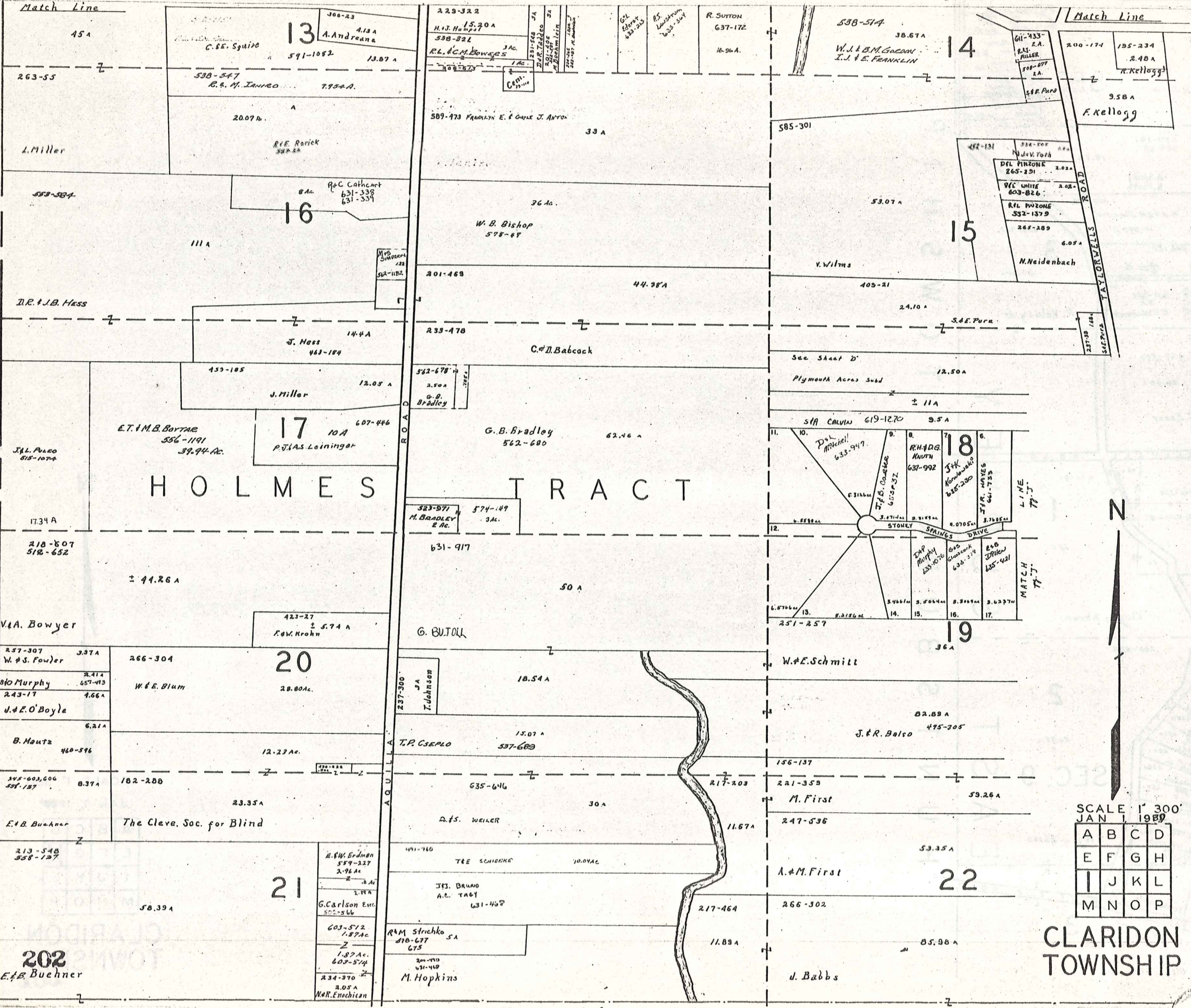
CLARIDON TOWNSHIP 201

P  
S  
H  
I  
P  
T  
O  
W  
N  
S  
H  
I  
P  
M  
U  
N  
I  
C  
I  
P  
A  
L

Match Line

Match Line

# H O L M E S T R A C T

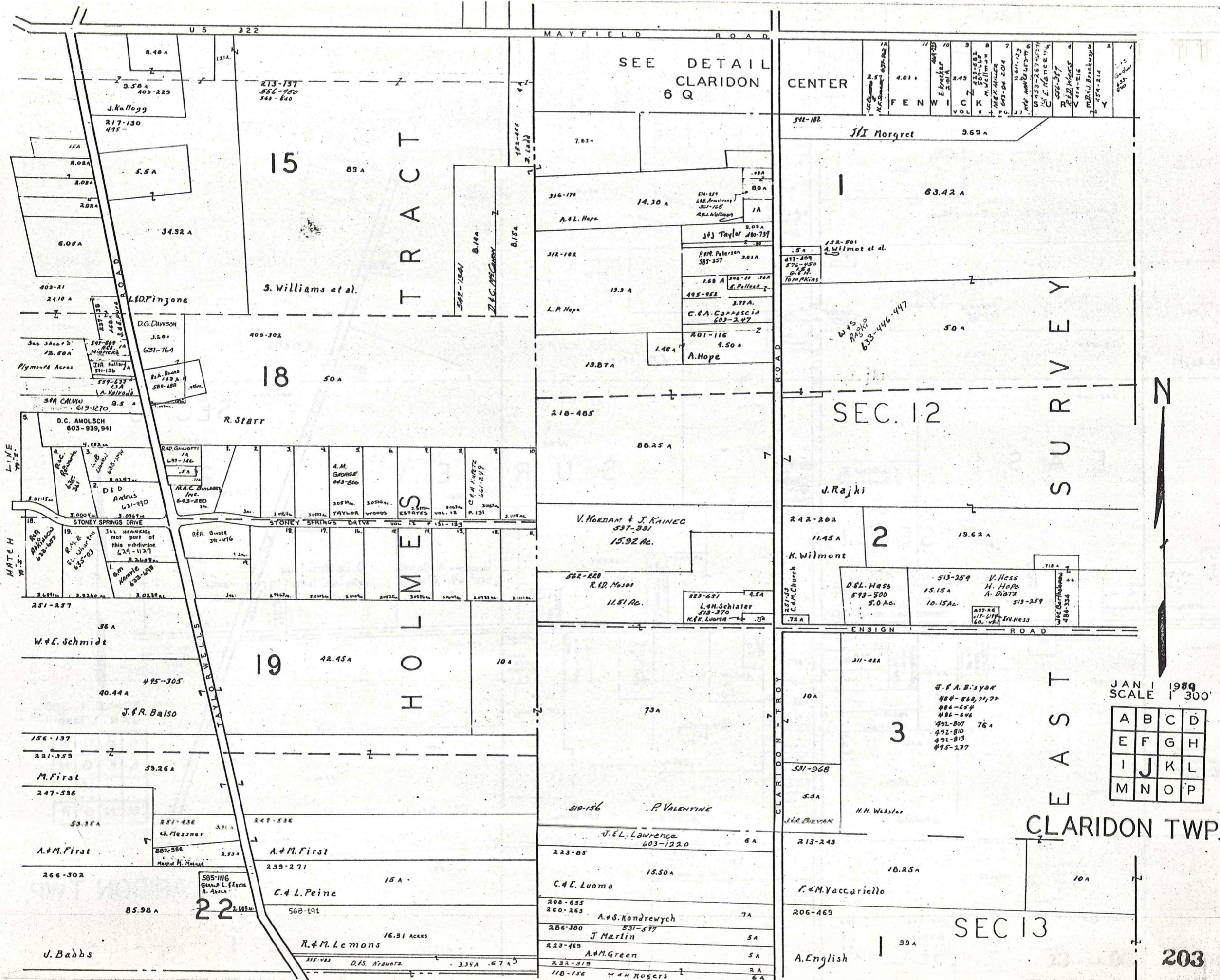


SCALE 1" = 300'  
JAN 1 1989

A	B	C	D
E	F	G	H
I	J	K	L
M	N	O	P

## CLARIDON TOWNSHIP

202  
E.B. Buehner



SEE DETAIL CLARIDON 6 Q

1	2	3	4	5	6	7	8	9	10	11	12
13	14	15	16	17	18	19	20	21	22	23	24

CLARIDON TWP. SEC 12

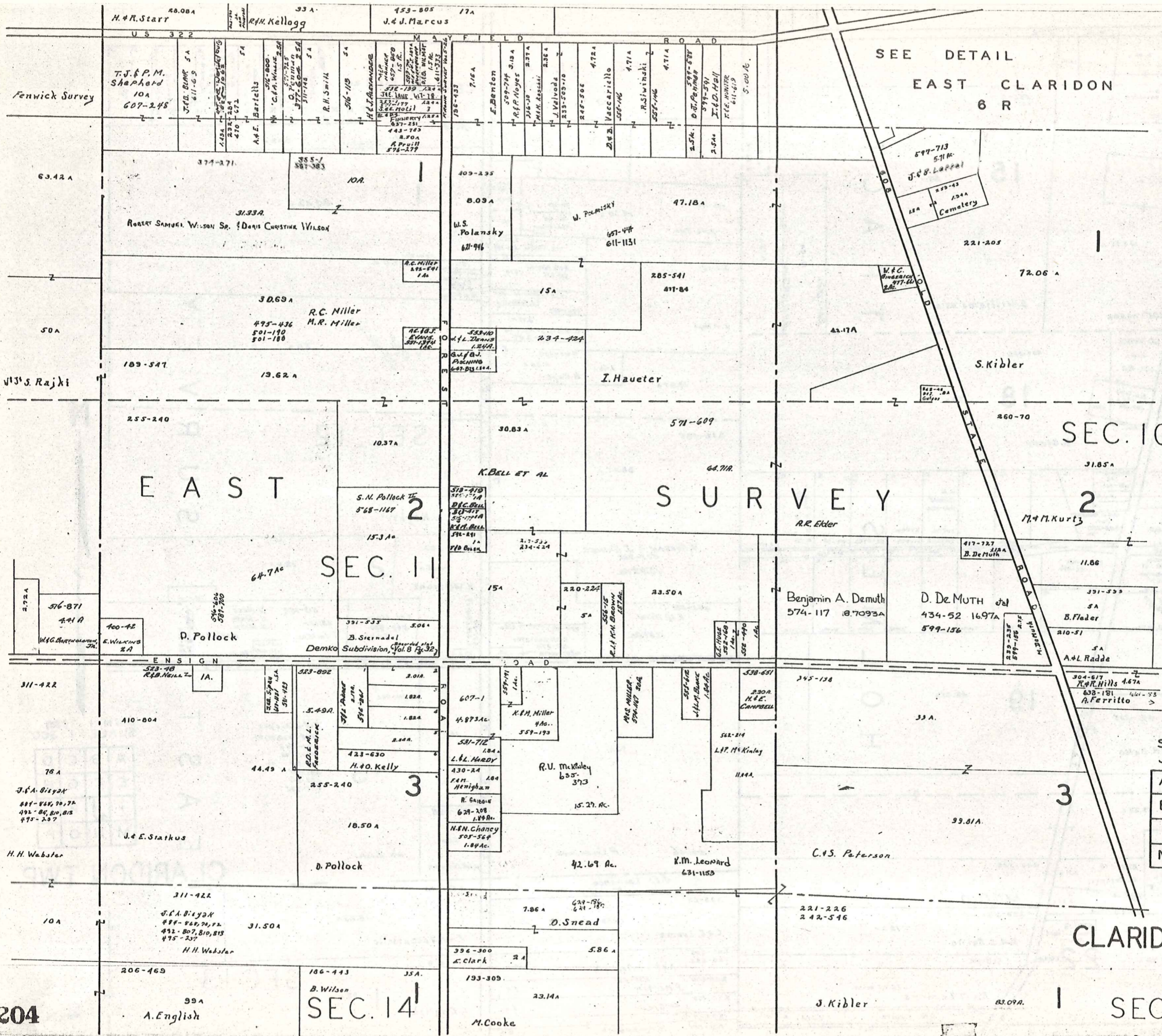
1	2	3
4	5	6
7	8	9
10	11	12
13	14	15
16	17	18
19	20	21
22	23	24

JAN 1 1980  
SCALE 1" = 300'

A	B	C	D
E	F	G	H
I	J	K	L
M	N	O	P

CLARIDON TWP.

SEC 13



SEE DETAIL  
EAST CLARIDON  
6 R

SEC. 10 N

SURVEY

EAST

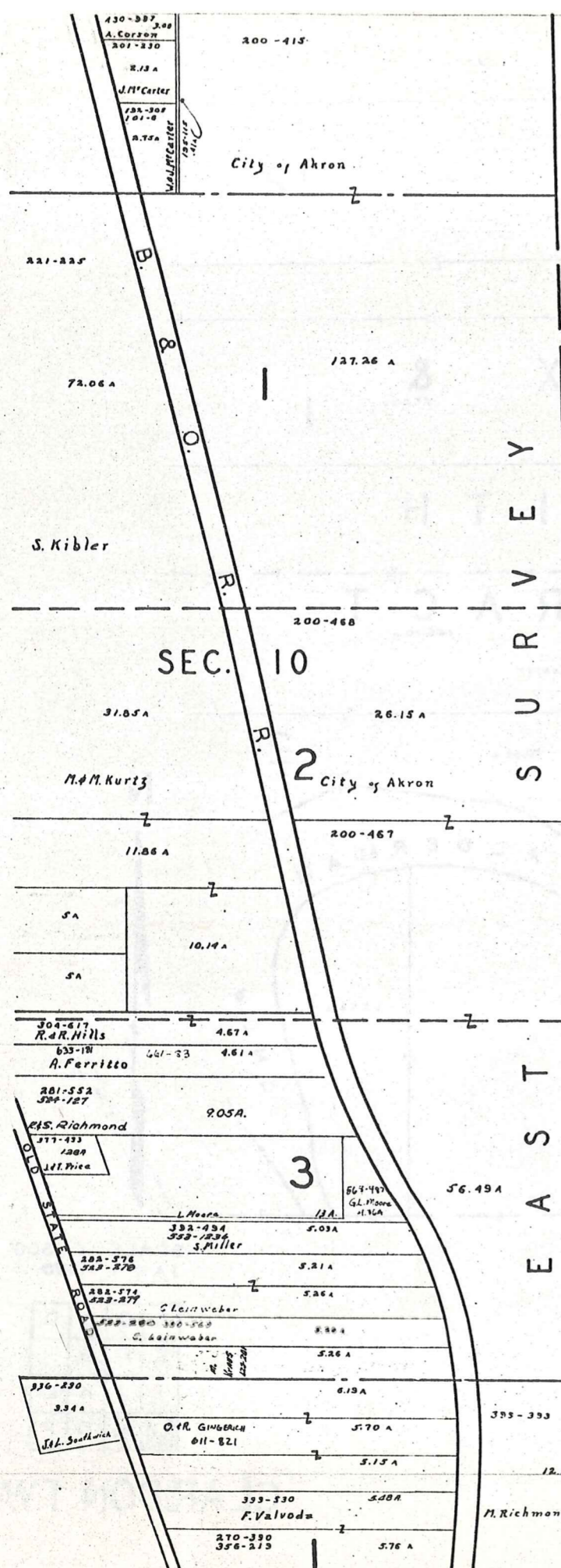
SEC. 11

A	B	C	D
E	F	G	H
I	J	K	L
M	N	O	P

SCALE 1" = 300'  
JAN 1, 1989

CLARIDON TWP.

SEC. 15



S U R V E Y  
T O W N S H I P  
E A S T  
H U N T S B U R G

SEC. 10



SCALE 1" = 300'  
JAN 1, 1980

A	B	C	D
E	F	G	H
I	J	K	L
M	N	O	P

CLARIDON TW

205

TOWNSHIP

21

22

213-548  
58.38 A  
E. Buechner

217-203  
11.67 A  
A. & M. First

247-536  
53.35 A

582-1015  
11.83 A

582-1019  
65.98 A  
Michael F. & Victoria Murphy

491-760  
10.04 Ac.  
T. & E. Schienke

305 BRONO  
A & C TAPP  
631-469  
635-011  
Vinc

R.M. STRICKO  
5 A  
478-677  
22 Ac.  
M. Hopkins

200-490  
22 Ac.  
M. Hopkins

370-1110  
443-232  
512-173  
389 A  
A. Berlin

576-958  
3.90 A  
M. Gum  
S. Malovic

443-90  
56 A  
Geauga Hospital Ass'n

430-147  
Assoc.  
C. Maguire et al.

449-1014

449-1014

443-378  
100.70 A  
Jewish Comm. Center

319-190  
2.5  
W. Miller

531-803  
P. MONTAGUE  
J. ROSS  
L. BRADDOCK

443-378  
100.70 A  
Jewish Comm. Center

340-93  
632 A  
Geauga Hosp. Assn. Inc.  
469-955  
10 A

Geauga County Inf.  
36-136

76 Ac.  
Board of County Commissioners of Geauga County Ohio

509-1029  
4.00 Ac.  
S. T. KNOUSS

633-579

154-54  
6.7 A  
The Pleasant Hill Golf Course, Inc.

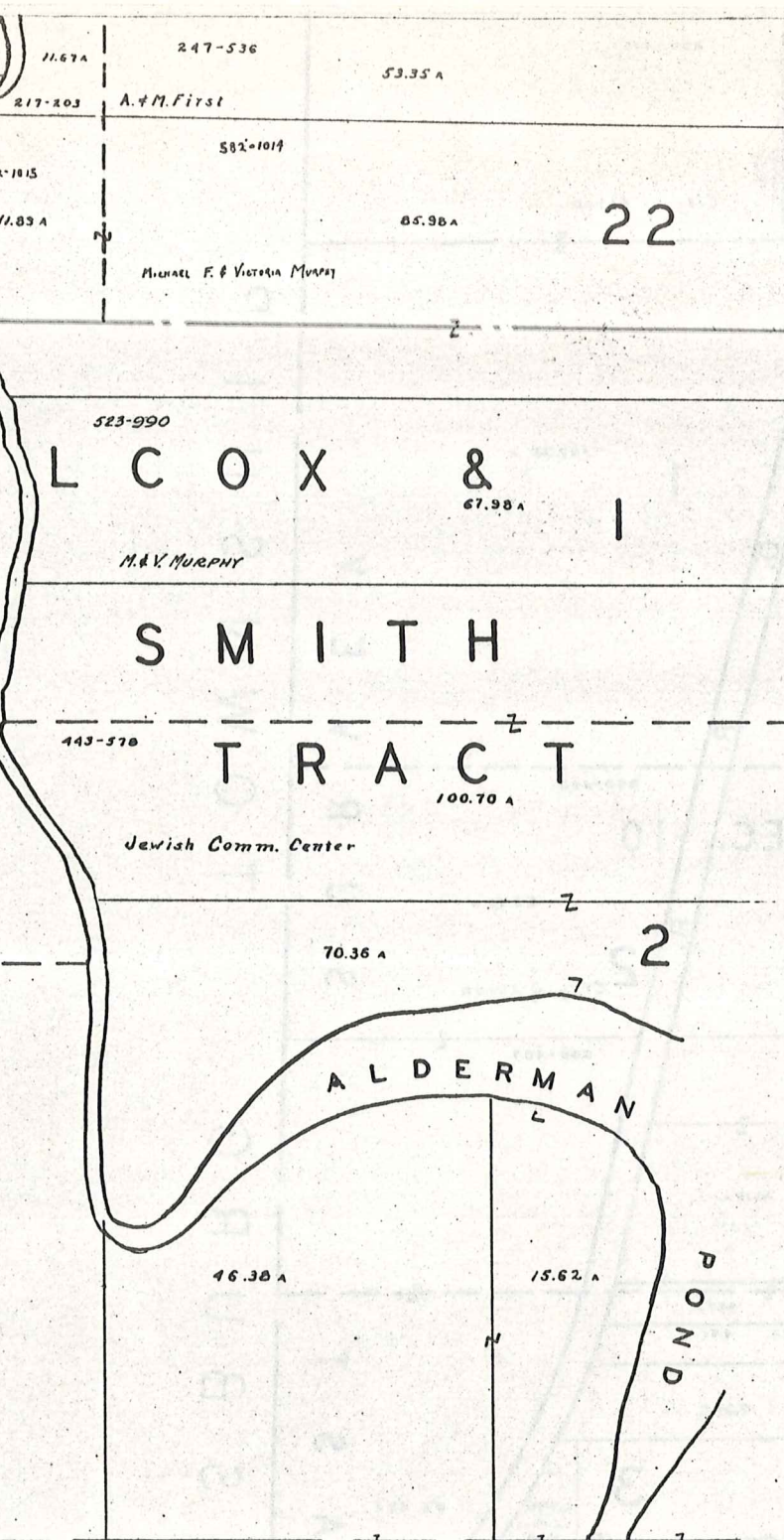
30 A

443-378  
100.70 A  
Jewish Comm. Center

70.36 A

46.38 A

15.62 A

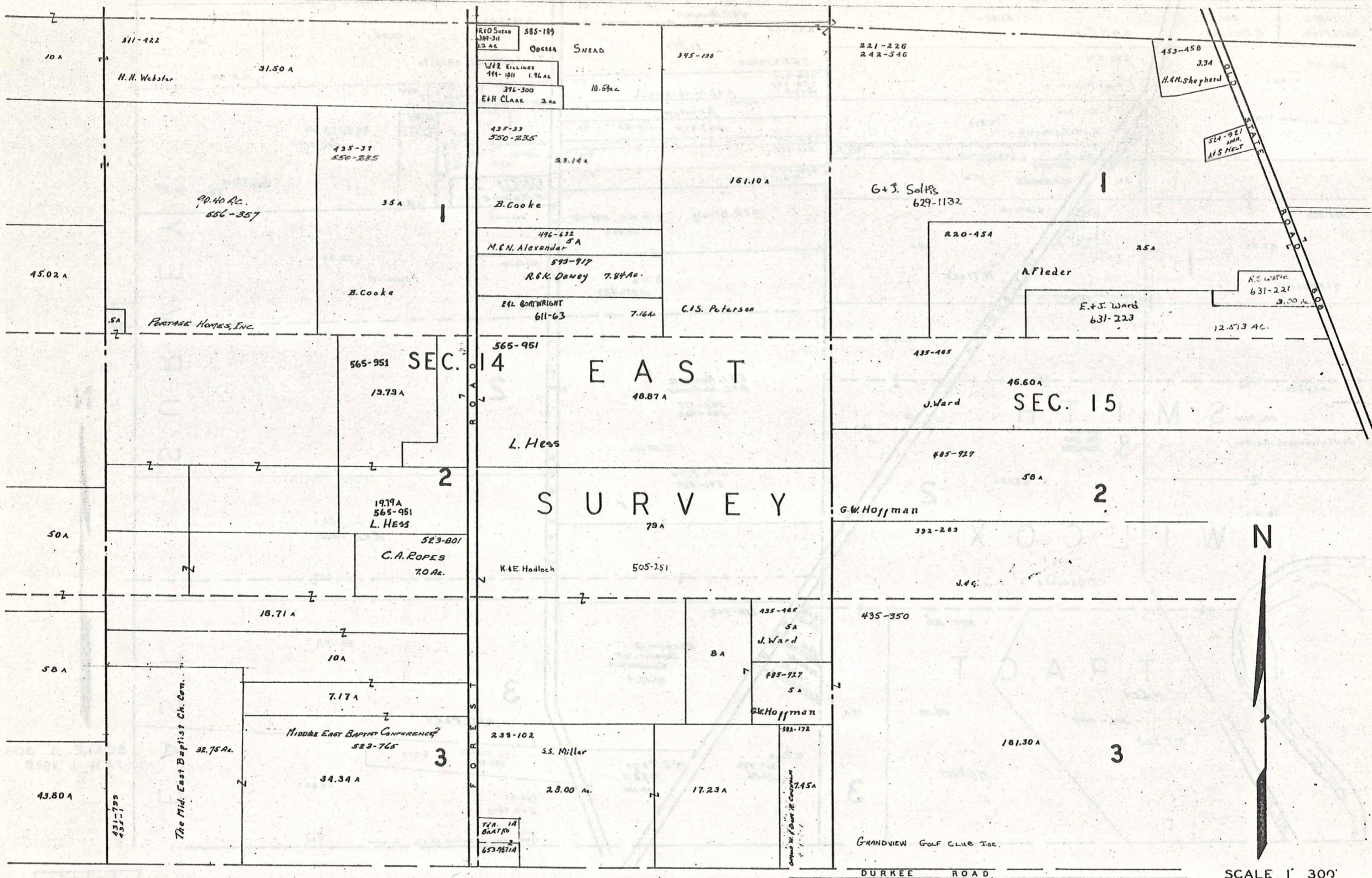


SCALE 1" = 300'  
JAN 1, 1980

A	B	C	D
E	F	G	H
I	J	K	L
M	N	O	P

CLARIDON TWP

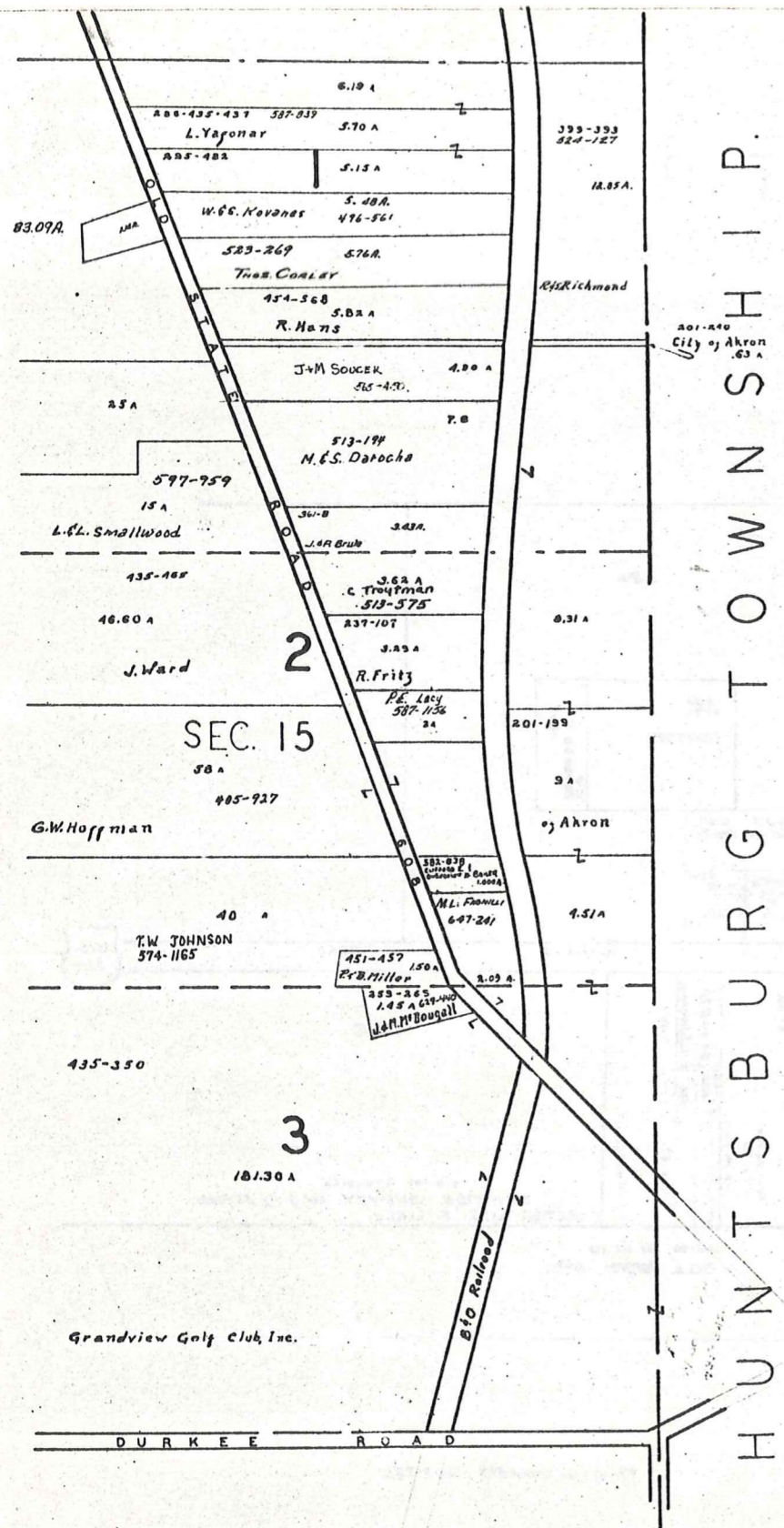




SCALE 1" = 300'  
 JAN 1, 1930

A	B	C	D
E	F	G	H
I	J	K	L
M	N	O	P

CLARIDON TWP.



H U N T S B U R G T O W N S H I P

SEC. 15

2

3

BURTON TWP.



SCALE 1" = 300'  
JAN 1, 1980

A	B	C	D
E	F	G	H
I	J	K	L
M	N	O	P

CLARIDON TWP.  
209



EAST CLARIDON  
AND VICINITY

# CLARIDON TP.

EAST CLARIDON  
AND VICINITY



SCALE 1 IN. = 25 CH. = 1/4 MI.

JAN. 1, 1902

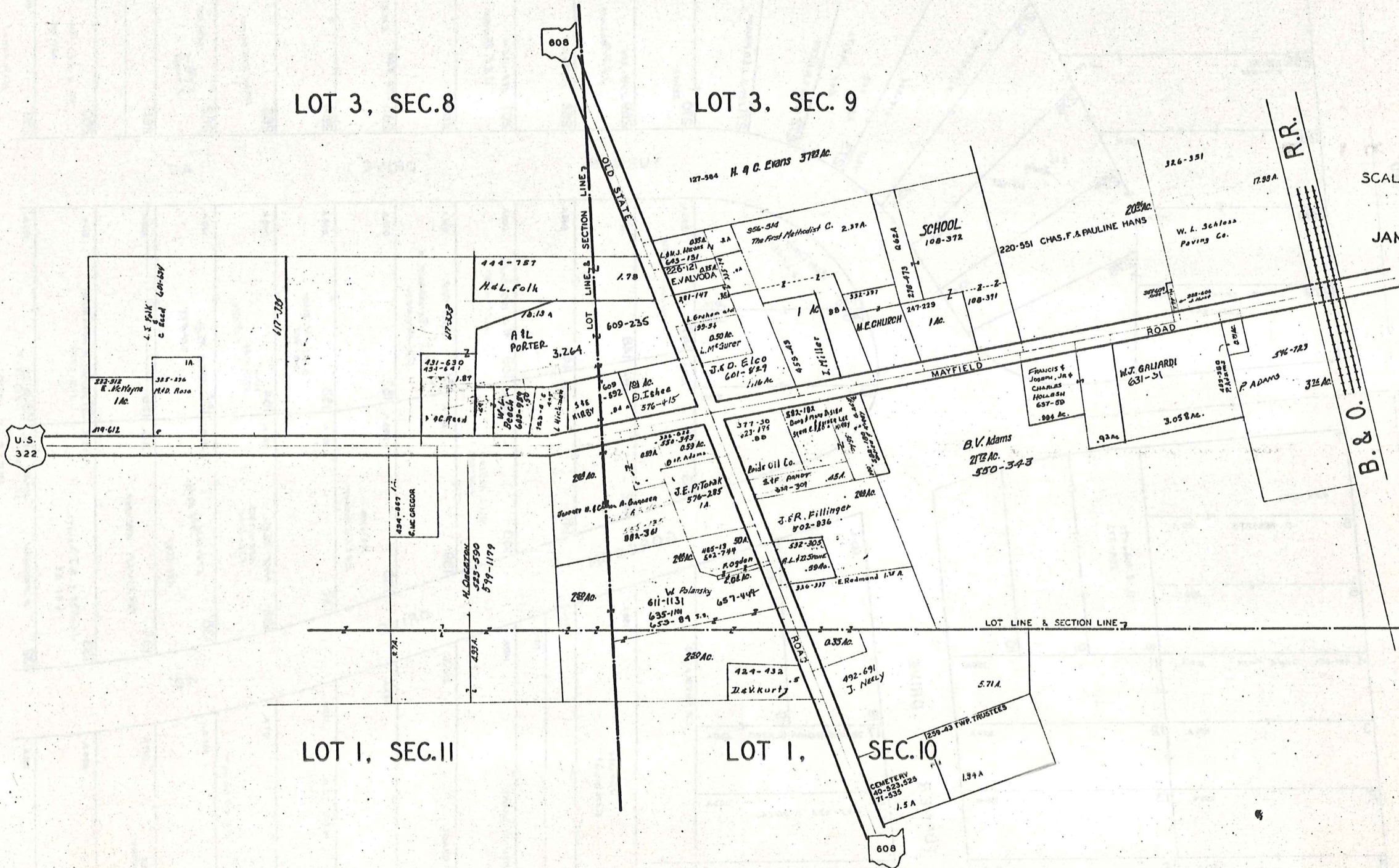


LOT 3, SEC. 8

LOT 3, SEC. 9

LOT I, SEC. II

LOT I, SEC. 10



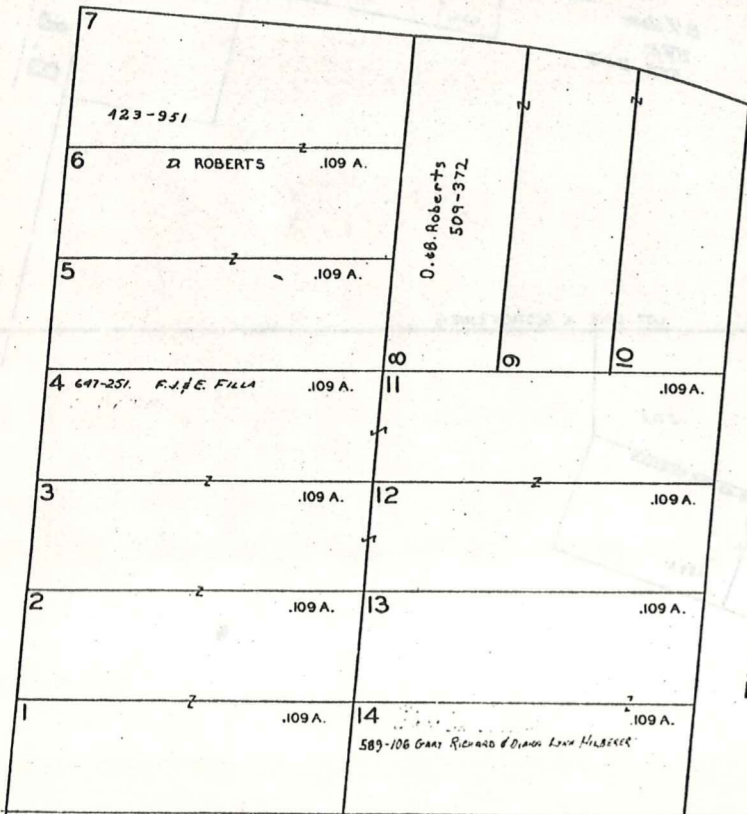
SCALE 1"=30 FT.



212

AQUILLA ROAD

60'

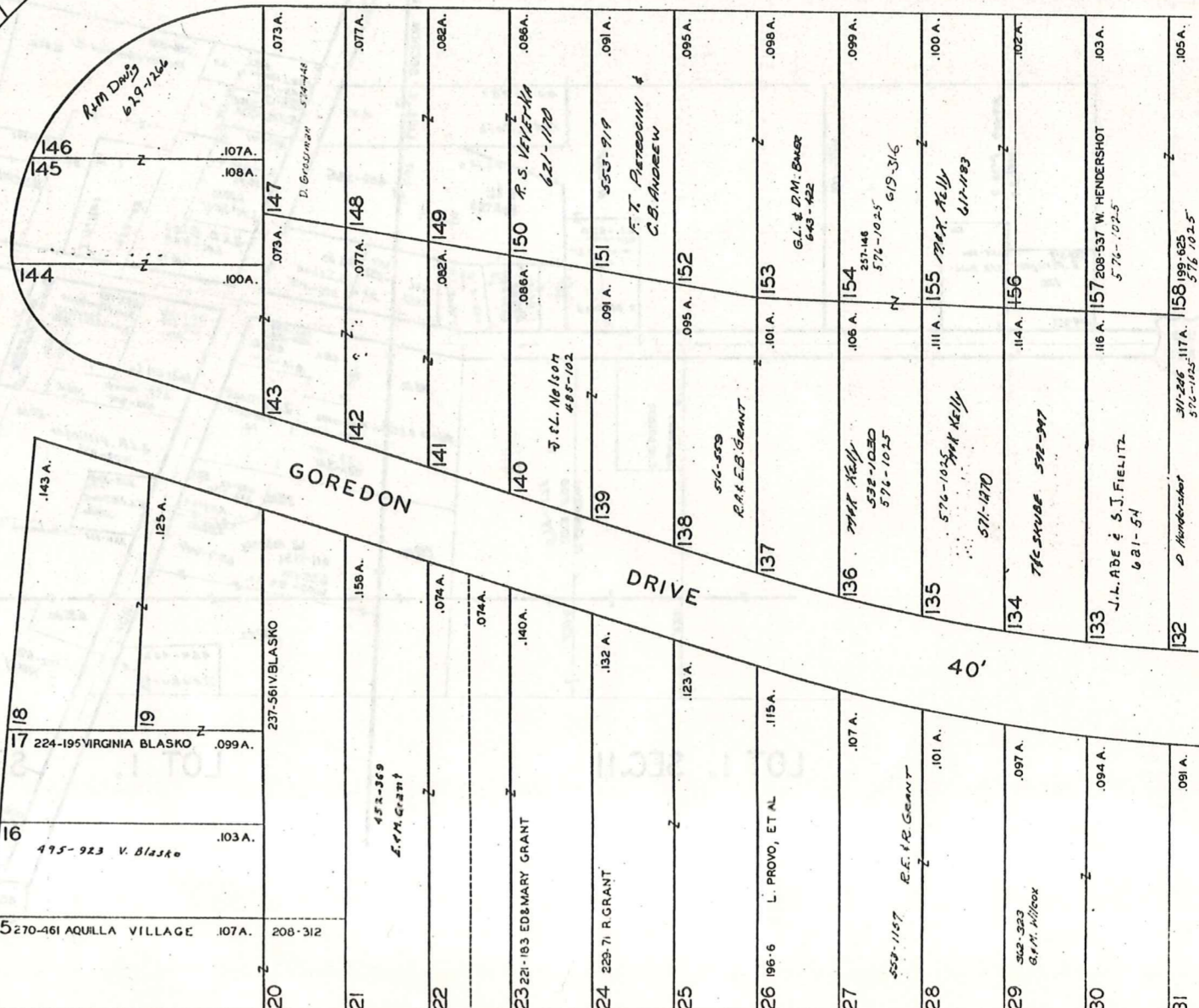


TURNER DRIVE



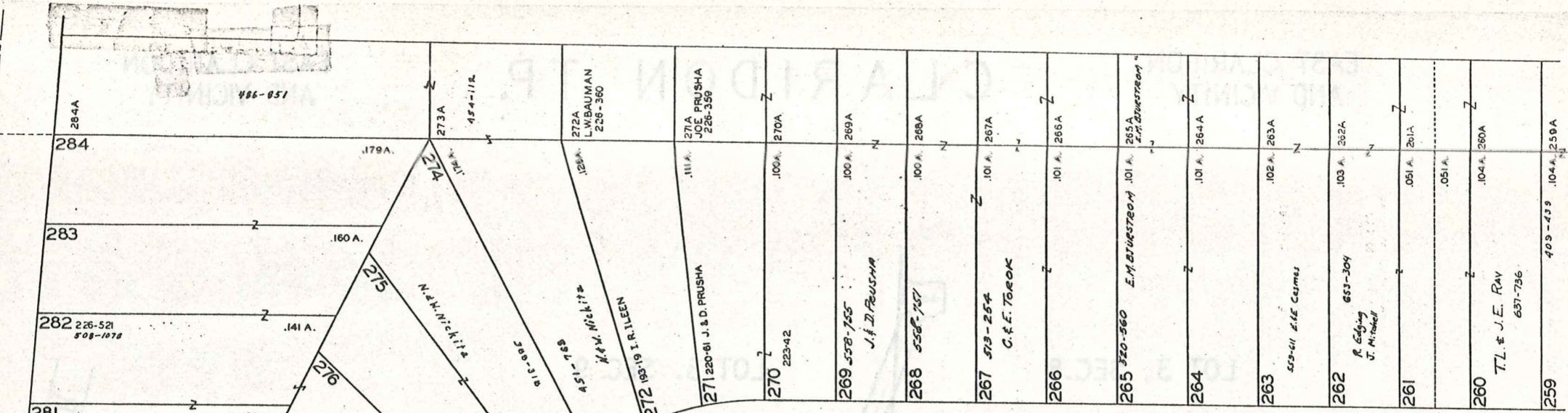
GOREDON DRIVE

JAN. 1, 1980



TURNER DRIVE

40'



40'

SEE 6-S-CTR.

SCALE 1"=30 FT.

SEE 6-S-CTR.

57	519-530	J. TATE	.110A.	108	303-181	A. S. DE WEESE	.101A.	182	S. B. BROWN	SEE 6-S-CTR.	.100A.	233	647-39	R.K. MILLER	.107A.	233A
58	505-13		.106A.	107			.103A.	183			.102A.	232	452-70		.107A.	232A
59	E.E. CERMES		.104A.	106	CUSTOM MOLDING PRODUCTS, INC		.104A.	184			.104A.	231	H.G. Cahill		.106A.	231A
60	179-381	J.B. & L. CHARPARD	.103A.	105	512-699		.104A.	185			.104A.	230	418-490 506-1120		.106A.	
61	524-79	E.E. CERMES	.103A.	104	Gordon Davis		.104A.	186			.104A.	229	453-757 C.R. Baker		.106A.	229A
62	524-642		.103A.	103			.104A.	187			.104A.	228	528-1120		.105A.	228A
63	G.F. Davis		.103A.	102			.104A.	188			.104A.	227	M. GREGA		.105A.	227A
64	484-742		.103A.	101			.104A.	189			.104A.	226	556-1 M.L. GREGA		.105A.	226A 226A 226A C. GRAVES
65	185-482	J.J. ZEMA ETAL	.103A.	100	410-99		.104A.	190	221-331		.104A.	225	F.S. STROMBER		.105A.	225A
66	J.S. & L.V. TILK		.103A.	99	352-189	F.M. MANCE	.104A.	191			.104A.	224	239-87		.104A.	224A
67			.103A.	98	224-284	S. VARGO	.104A.	192			.104A.	223			.104A.	223A
68			.103A.	97			.052A.	193			.104A.	222			.104A.	222A
69	653-174	C.F. Gueethi	.103A.	96	661-882		.104A.	194	628-057		.104A.	221	425-1037 574-396		.104A.	221A
70	R. NIELSON		.102A.	95			.104A.	195	D.H. REZO		.104A.	220			.103A.	220A
71	635-686		.102A.	94	516-554	SALVAGO	.104A.	196	285-425	LEWISHEENE	.104A.	219	418-601		.103A.	219A
72			.102A.	93			.104A.	197	114	S.METHE	512-509	218	J.C. ORLEFF		.051A.	218A
73	A. CAIN		.102A.	92			.104A.	198	195-473		.104A.	217			.103A.	217A
74	A. CAIN		.102A.	91			.104A.	199			.104A.	216			.102A.	216A
75	495-923	V. Blazko	.102A.	90	G.H. SIMUES	647-557	.104A.	200			.104A.	215	635-1050		.102A.	215A
76	192-600	H.G. & H.M. HECKER	.102A.	89			.104A.	201			.104A.	214	185-354	F.P. TRAVERSE	.102A.	214A
77	631-104		.102A.	88			.104A.	202			.104A.	213	285-109	LLR. TARANTINO	.101A.	213A
78	I. Shea & F.R. Baumgartner		.102A.	87			.104A.	203			.104A.	212	251-241	S. & J. CENTA	.101A.	212A
79			.102A.	86			.104A.	204			.104A.	211	245-599	S. J. CENTA	.101A.	211A
80	D.A. LOFTUS		.092A.	85			.092A.				.092A.	208	531-446		.103A.	
81			.092A.	84	233-249	L. ZINNER	.092A.				.092A.	207			.092A.	
82			.092A.	83			.115A.				.105A.	206	316-182	M.V.C. KOVACH	.092A.	
			.092A.	82			.105A.				.105A.	205	188-229	AQUILLA LAKE COM.	.092A.	
			.092A.				.105A.				.105A.	204			.105A.	
			.092A.				.105A.				.105A.	203			.105A.	
			.092A.				.105A.				.105A.	202			.105A.	
			.092A.				.105A.				.105A.	201			.105A.	
			.092A.				.105A.				.105A.	200			.105A.	
			.092A.				.105A.				.105A.	199			.105A.	
			.092A.				.105A.				.105A.	198			.105A.	
			.092A.				.105A.				.105A.	197			.105A.	
			.092A.				.105A.				.105A.	196			.105A.	
			.092A.				.105A.				.105A.	195			.105A.	
			.092A.				.105A.				.105A.	194			.105A.	
			.092A.				.105A.				.105A.	193			.105A.	
			.092A.				.105A.				.105A.	192			.105A.	
			.092A.				.105A.				.105A.	191			.105A.	
			.092A.				.105A.				.105A.	190			.105A.	
			.092A.				.105A.				.105A.	189			.105A.	
			.092A.				.105A.				.105A.	188			.105A.	
			.092A.				.105A.				.105A.	187			.105A.	
			.092A.				.105A.				.105A.	186			.105A.	
			.092A.				.105A.				.105A.	185			.105A.	
			.092A.				.105A.				.105A.	184			.105A.	
			.092A.				.105A.				.105A.	183			.105A.	
			.092A.				.105A.				.105A.	182			.105A.	
			.092A.				.105A.				.105A.	181			.105A.	
			.092A.				.105A.				.105A.	180			.105A.	

LAKE AQUILLA SUBDIVISION NO. 1 & LAKE AQUILLA SUBDIVISION NO. 1 ADDITION VOL. 1 PGS 50 & 51 REC OF PLATS

NOW

AQUILLA VILLAGE VOL. 4 PAGES 26-27 REC. OF PLATS JAN. 1, 1980

213 6-S EAST



**AQUILLA VILLAGE VOL. 4, PAGES 26-27 REC. OF PLATS**  
 FORMERLY  
**LAKE AQUILLA ESTATES COMPANY'S SUBDIVISION NO. 1**

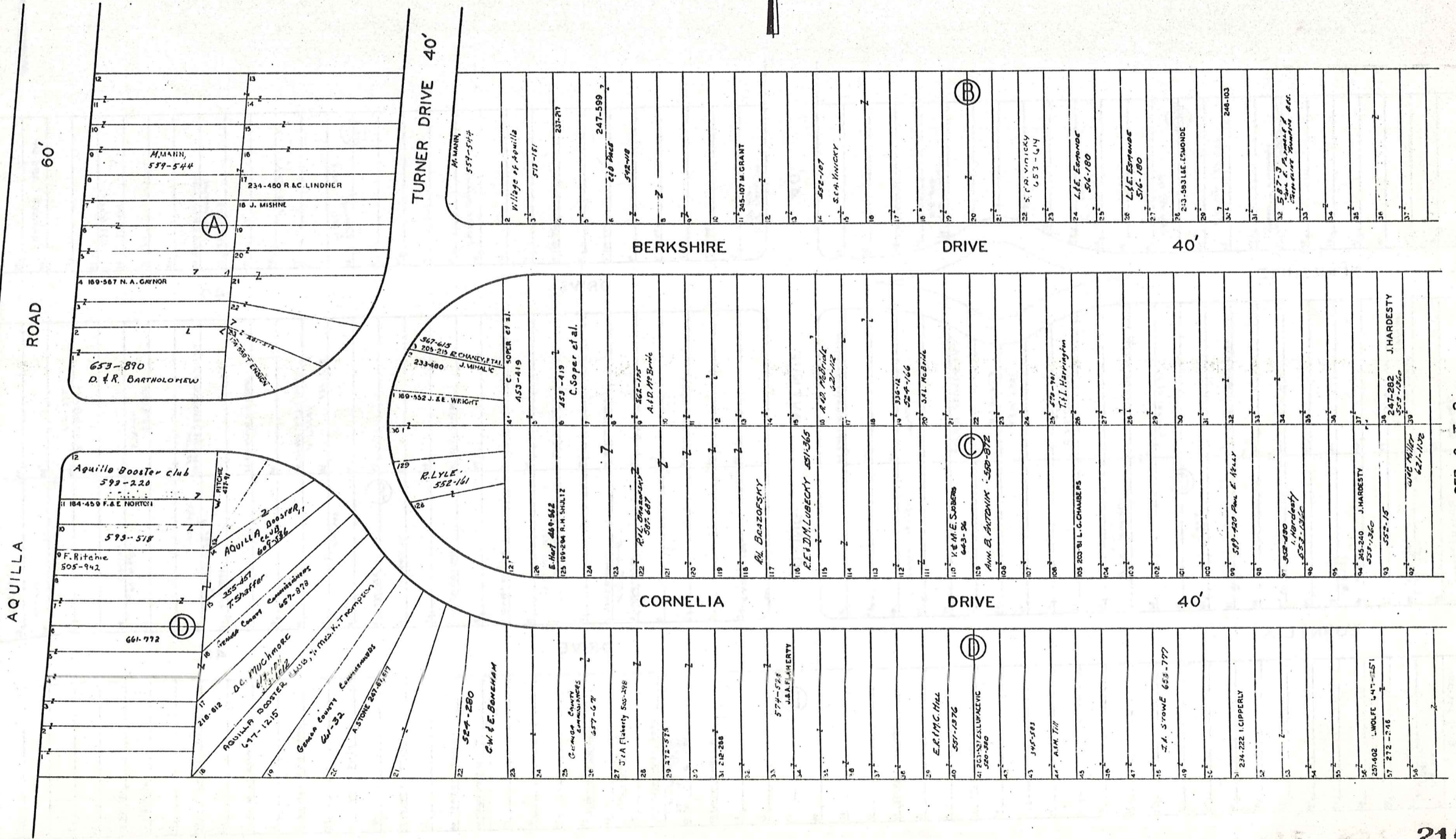
AND RESUBDIVISION OF BLOCKS I & J AND SUBLOTS  
 NOS. 125 TO 141 INCLUSIVE IN BLOCK D

VOL. 2 PAGES 6, 7, 8, 9, 10, 11, 12, 19 & 33 REC. OF PLATS

SCALE 1 INCH = 40 FEET

JAN. 1, 1980

PART OF ORIGINAL LOT NOS. 9 & 10 OF THE HOLMES TRACT CLARIDON TOWNSHIP



SEE 6-T-2

AQUILLA VILLAGE VOL. 4, PAGES 26-27 REC. OF PLATS  
FORMERLY  
LAKE AQUILLA ESTATES COMPANY'S SUBDIVISION NO. 1

AND RESUBDIVISION OF BLOCKS I & J AND SUBLOTS  
NOS. 125 TO 141 INCLUSIVE IN BLOCK D

PART OF ORIGINAL LOT NOS. 9 & 10 OF THE HOLMES TRACT CLARIDON TOWNSHIP

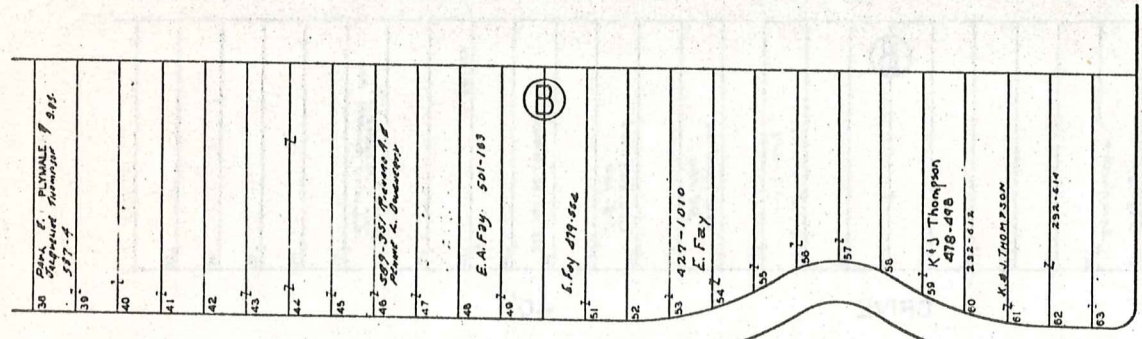
VOL. 2 PAGES 6, 7, 8, 9, 10, 11, 12, 19 & 33 REC. OF PLATS

SCALE 1 INCH = 40 FEET

JAN. 1, 1980

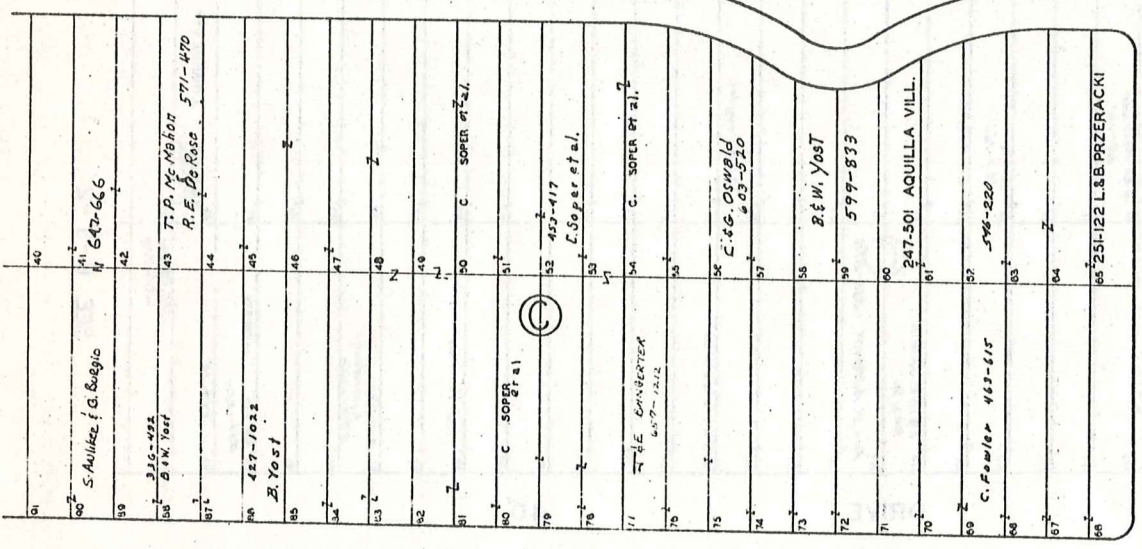


SEE 6-T-1



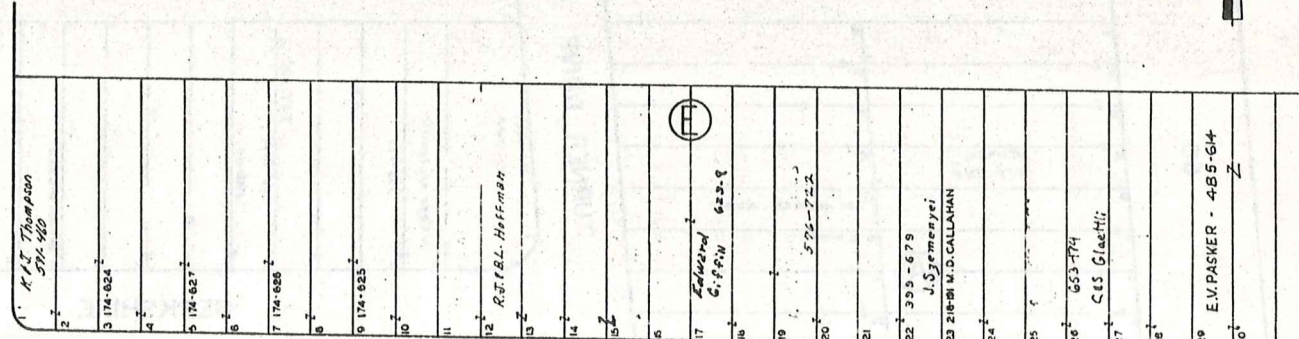
BERKSHIRE

40'



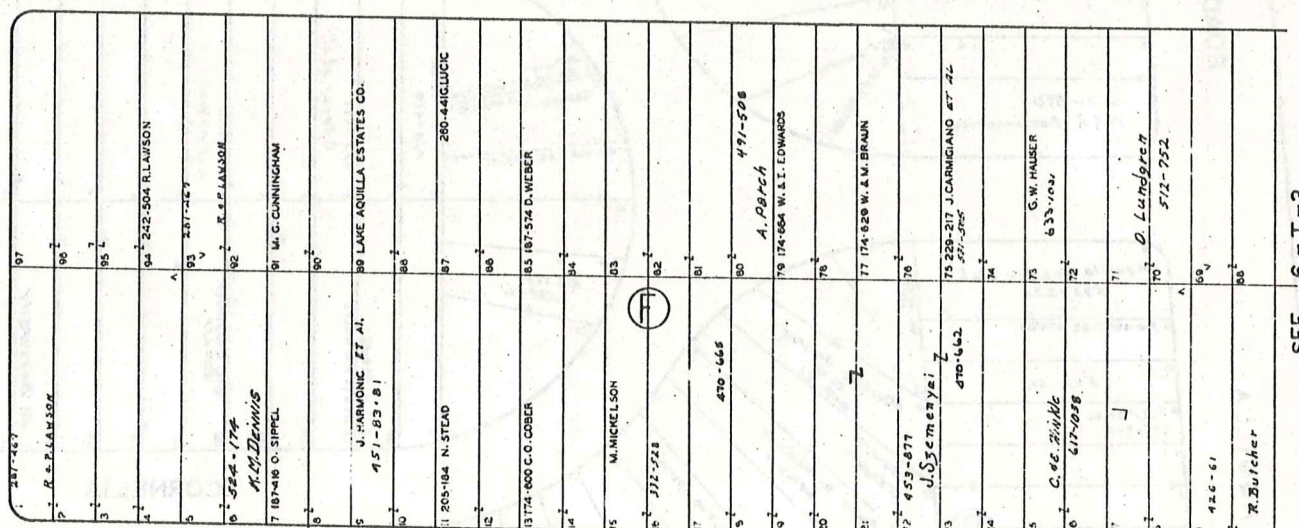
CORNELIA

LORING AVENUE



DRIVE

40'

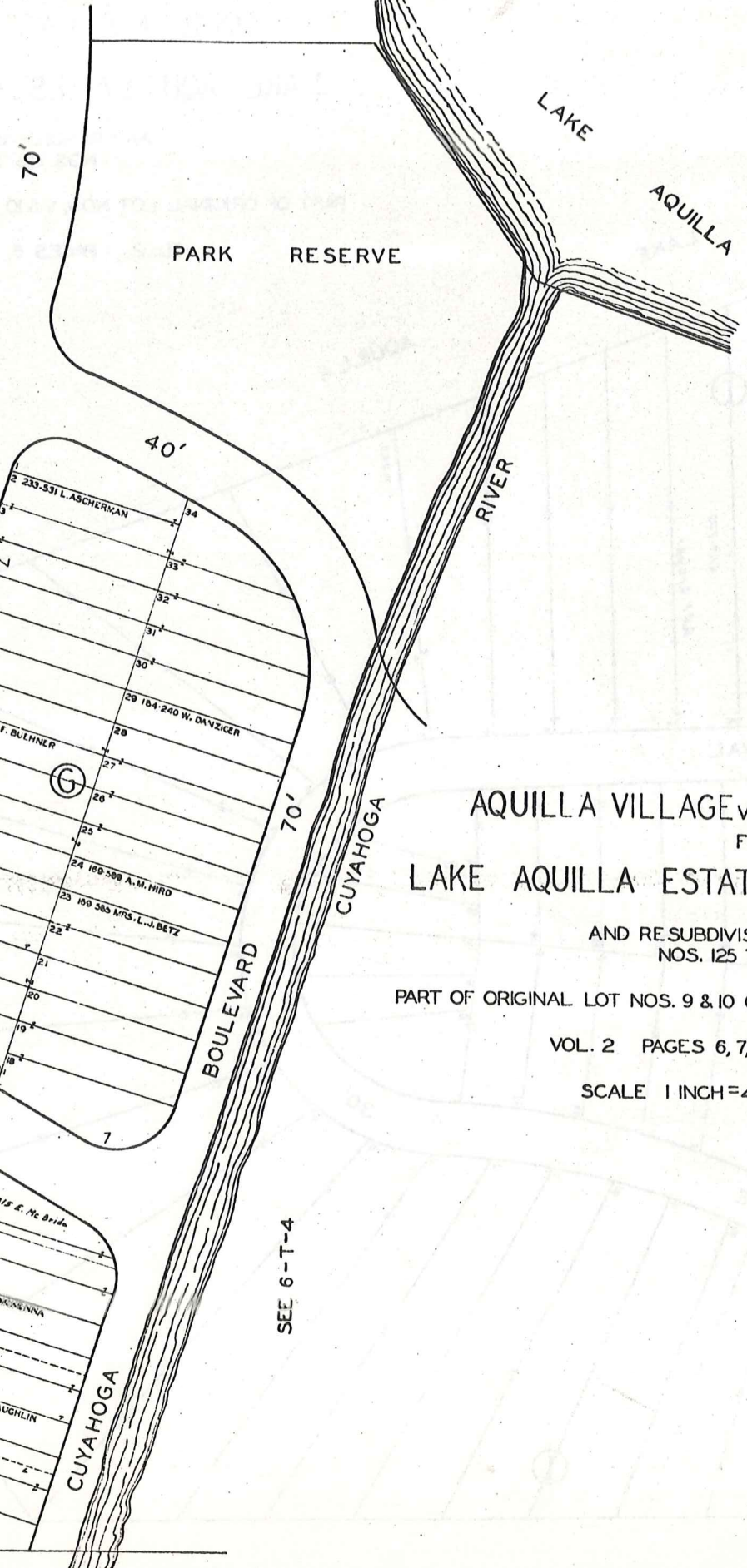
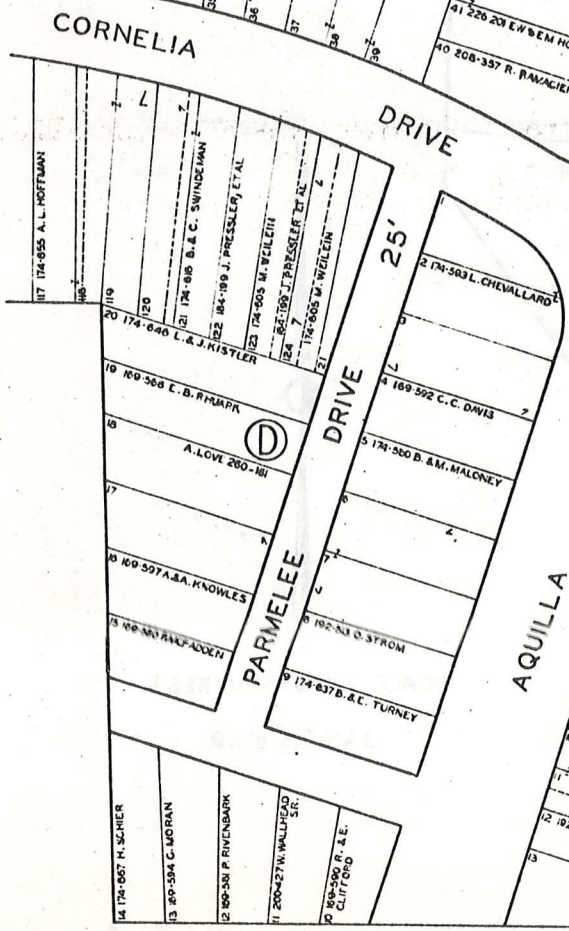
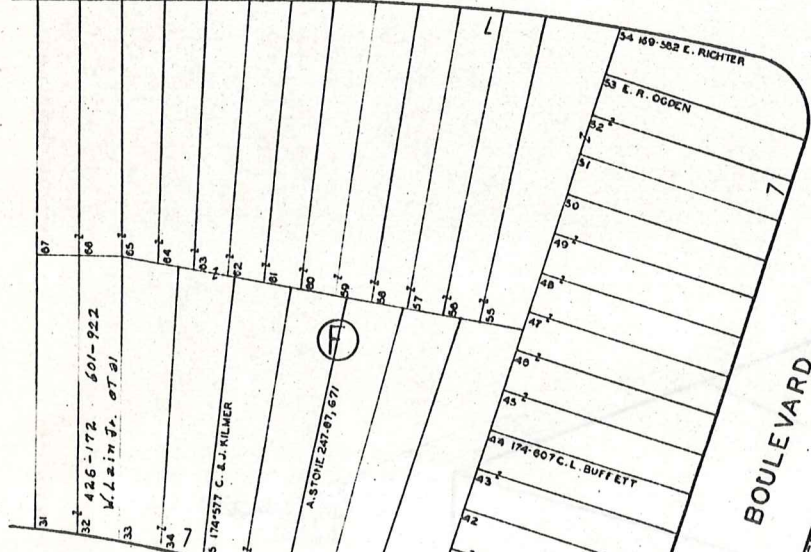
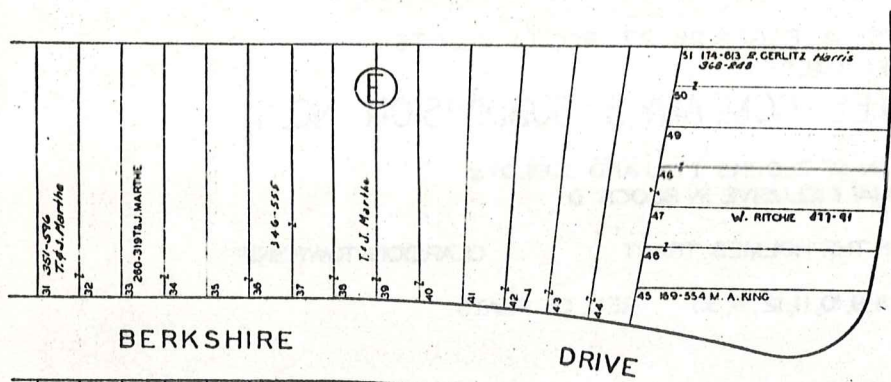


DRIVE

40'

SEE 6-T-3

SEE 6-T-2



AQUILLA VILLAGE VOL. 4 PAGES 26-27 REC. OF PLATS  
 FORMERLY  
 LAKE AQUILLA ESTATES COMPANY'S SUBDIVISION NO. 1  
 AND RESUBDIVISION OF BLOCKS I & J AND SUBLOTS  
 NOS. 125 TO 141 INCLUSIVE IN BLOCK D  
 PART OF ORIGINAL LOT NOS. 9 & 10 OF THE HOLMES TRACT CLARIDON TOWNSHIP  
 VOL. 2 PAGES 6, 7, 8, 9, 10, 11, 12, 19 & 33 REC. OF PLATS  
 SCALE 1 INCH = 40 FEET  
 JAN. 1, 1980



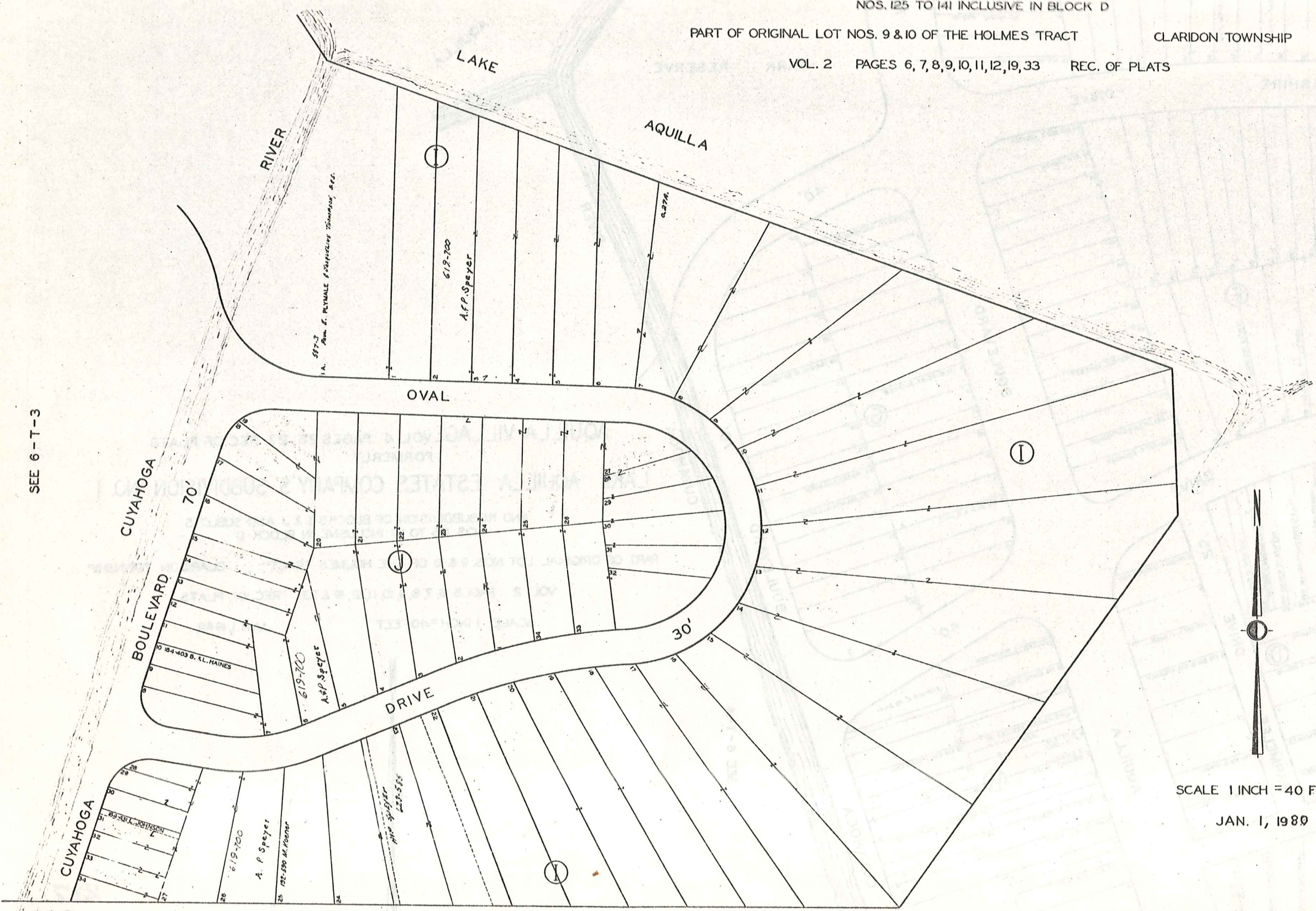
SEE 6-T-4

AQUILLA VILLAGE VOL. 4 PAGES 26-27 REC. OF PLATS  
FORMERLY  
LAKE AQUILLA ESTATES COMPANY'S SUBDIVISION NO. 1

AND RESUBDIVISION OF BLOCKS I & J AND SUBLOTS  
NOS. 125 TO 141 INCLUSIVE IN BLOCK D

PART OF ORIGINAL LOT NOS. 9 & 10 OF THE HOLMES TRACT CLARIDON TOWNSHIP

VOL. 2 PAGES 6, 7, 8, 9, 10, 11, 12, 19, 33 REC. OF PLATS



SEE 6-T-3

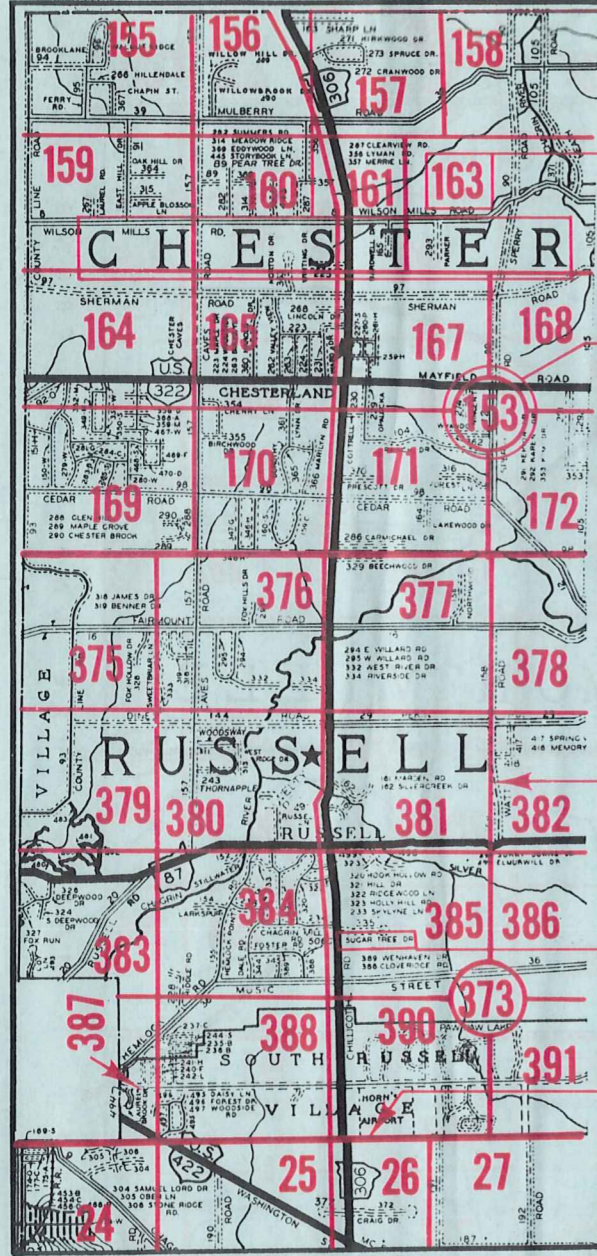


SCALE 1 INCH = 40 FEET

JAN. 1, 1989

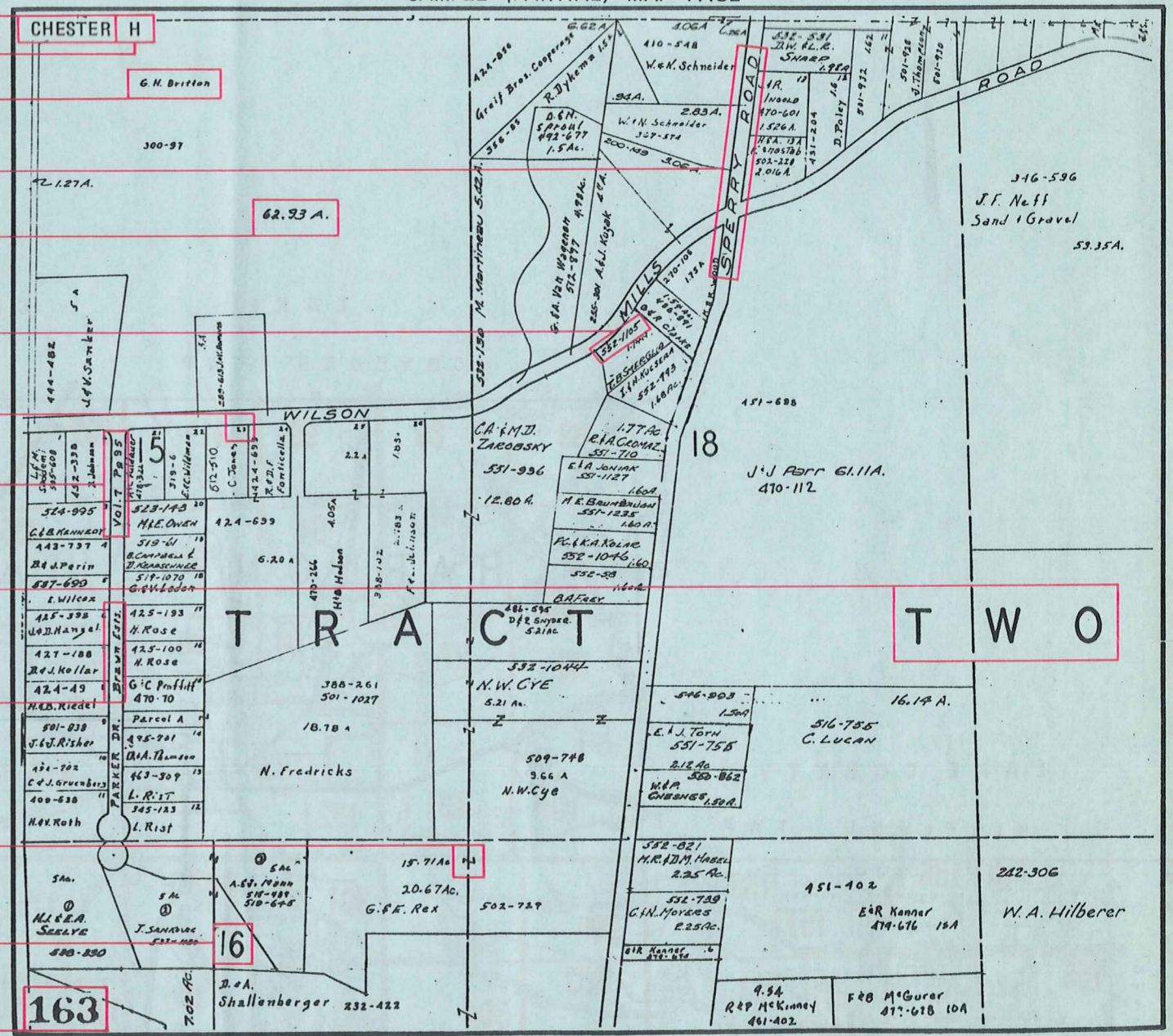
# Explanation and Use Sheet for Geauga County, Ohio

SAMPLE (PARTIAL) COUNTY INDEX MAP



- Township Name
- Map Page Number (Or Letter)
- Owners Name
- Street Name
- Acreage
- Municipality Index Beginning Atlas Page Number
- Deed Book & Page
- Subdivision Lot Number
- Plat Book & Page
- Tract Number
- Atlas Page Boundary
- Subdivision Name
- Street Name
- Denotes Continuous Ownership
- Municipality Index Atlas Page Boundary
- Tract Lot Number
- Atlas Page Number

SAMPLE (PARTIAL) MAP PAGE



## USE OF THE MAP VOLUME

1. LOCATE THE GENERAL AREA OF INTEREST ON THE COUNTY INDEX MAP, ATLAS PAGE 'B'.
2. A. IF PROPERTY IS IN A TOWNSHIP, NOTE THE ATLAS PAGE NUMBER. TURN TO THE PAGE INDICATED AND LOCATE SPECIFIC PARCEL OF INTEREST.  
NOTE: ON SOME MAPS YOU MAY BE REFERRED TO A DETAIL SHEET SHOWING AN ENLARGEMENT OF THE AREA. THESE MAPS ARE FOUND AT THE END OF THE REGULAR MAP PAGES IN EACH TOWNSHIP EITHER IN ALPHABETICAL OR NUMERICAL SEQUENCE.
- B. IF PROPERTY IS IN A MUNICIPALITY, REFER TO THE TABLE OF CONTENTS, ATLAS PAGE 'C', AND NOTE THE BEGINNING ATLAS PAGE NUMBER FOR THE MUNICIPALITY OF INTEREST.
  - (1) TURN TO THE PAGE INDICATED. ON THIS PAGE WILL APPEAR AN INDEX MAP FOR THAT MUNICIPALITY.
  - (2) LOCATE SPECIFIC AREA OF INTEREST AND NOTE THE MAP PAGE NUMBER.  
NOTE: DO NOT CONFUSE THE MAP PAGE NUMBER WITH THE ATLAS PAGE NUMBER IN THESE MUNICIPALITIES.
  - (3) FOLLOW EITHER ALPHABETICAL OR NUMERICAL SEQUENCE TO THE MAP PAGE INDICATED AND LOCATE SPECIFIC PARCEL OF INTEREST.